



LIFE SORIA  
**ForestAdapt**

# Forests, adapting our natural shields



SUSTAINABLE ADAPTATION OF FOREST MANAGEMENT  
IN THE PROVINCE OF SORIA TO CLIMATE CHANGE

## Europe stands up for Soria's forests as shields against climate change







The aim of **Soria ForestAdapt** is to promote sustainable adaptation of the forestry sector as a shield against climate change. Its great benefits in atmospheric carbon dioxide absorption are well known, but its role in water cycles, soil protection against erosion or biodiversity conservation are often unknown. And this shield is a pillar for the development of the local population as well: resources such as wood, mushrooms, resin or honey, depend on forests in order to be generated.

However, the threat of climate change surpasses the capacity of forests to adapt to new situations, since the most suitable adaptation measures are not always included in their management plans.

Therefore, Europe stands up for Soria's forests as shields against climate change through Soria ForestAdapt, a European project that will work for more than 3 years in 36,000 hectares of forests in Soria to turn them into models of forest management.

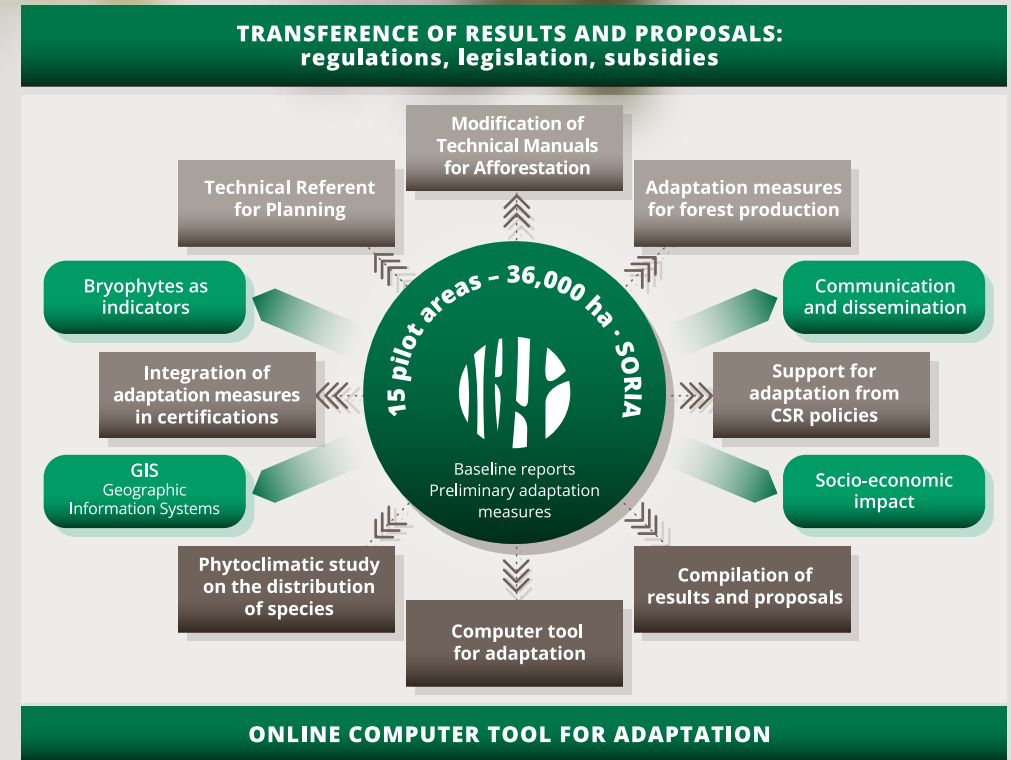
## Knowledge as a tool for change

**Soria ForestAdapt** will work for more than three years to take care of the great heritage that our forests entail, starting in Soria and with the idea of being replicable in other parts of the world.

 <p><b>OBJECTIVE</b></p> <p>Preserving forests and avoiding their degradation</p>	 <p><b>WHO</b></p> <p><b>Project partners:</b> conservation entities, universities, certification entities, regional administration</p>	 <p><b>THREAT TO ASSESS</b></p> <p>Vulnerability of Soria's forests to climate change</p> <p>15 pilot forests in Soria. 36,000 ha.</p>
 <p><b>HOW</b></p> <p>With a methodology to assess the vulnerability of the different species</p> <p>Soria ForestAdapt Adaptation Tool</p>	 <p><b>RESULT</b></p> <p>Insights to plan for optimal management that helps in the adaptation to climate change</p> <p>Technical Referent for Planning, Adaptation of Technical Manuals for Afforestation, Catalogue of adaptation measures</p>	 <p><b>TRANSFER REPLICATION</b></p> <p>Sharing the knowledge and replicating in other areas of Spain and Europe</p> <p>Meetings, workshops, conferences, seminars with stakeholders and policy-makers</p>

## FORESTS MANAGED THROUGH TOOLS AND METHODOLOGIES

### LIFE SORIA FORESTADAPT PROJECT FRAMEWORK



Thanks to the design of a tool for adaptation of forest management to climate change in the province of Soria, the main climatic impacts that took place in the recent past can be identified and their effect in the future for this century projected. This will allow the proposal of adaptation measures at forest scale in order to be able to design an appropriate adaptation strategy. This tool will also provide maps with the potential distribution of the different species and forests in the future and will be replicable in other geographic locations.

The results obtained are synthesized in order to create general proposals that contribute to the development of public policies and management recommendations. The materials generated in each action will be available and of free access through the project's website.

LIFE Soria ForestAdapt aims at anticipating the risks that threaten to destroy our forestry jewels and protect them in order to safeguard all the benefits they provide.

# FORESTRY SECTOR AND CLIMATE RISKS

- ↘ Water availability
- ↗ Drought risk
- ↗ Heat wave risk
- ↗ Soil erosion risk

- ↘ Optimal areas for forests
- ↗ Pests and diseases
- ↗ Wildfires
- ↗ Extreme weather events

- ↘ Wood production
- ↘ Mushroom production
- ↘ Honey production
- ↘ Pasture production

- ↘ Forest regeneration
- ↘ Water regeneration
- ↗ Tree mortality
- ↗ Alien invasive species

## SORIA SPAIN

### CESEFOR

Foundation Centre of Services and Forestry and its Industry Promotion in Castile and Leon  
[rocio.gallego@cesefor.com](mailto:rocio.gallego@cesefor.com)

### FGN

Global Nature Foundation  
[dhernandez@fundacionglobalnature.org](mailto:dhernandez@fundacionglobalnature.org)

### UVA

University of Valladolid  
[josemiguel.olano@uva.es](mailto:josemiguel.olano@uva.es)

### FUNGE

General Foundation of the University of Valladolid  
[rociob@fungue.uva.es](mailto:rociob@fungue.uva.es)

### FSC

Forest Stewardship Council Spain  
[s.martinez@es.fsc.org](mailto:s.martinez@es.fsc.org)

### PEFC

Association for Spanish Forest Certification  
[arantzaoleaga@pefc.es](mailto:arantzaoleaga@pefc.es)

### FEC

Company and Climate Private Foundation  
[ecarles@empresaclima.org](mailto:ecarles@empresaclima.org)



LIFE19 CCA/ES/001181

#### PROJECT PARTNERS:



#### WITH THE SUPPORT OF:



With the contribution of the LIFE financial instrument of the European Union

[www.soriaforestadapt.es](http://www.soriaforestadapt.es) · [info@soriaforestadapt.es](mailto:info@soriaforestadapt.es)

Follow us on: #ForestAdapt #SoriaEscudoNatural